



2021



EXPERIENCE IT



EXPERIENCE IT





We are forged in fire and solidly built—to experience the challenges of a hard day's work. We're fully loaded and machined to precision—to experience the thrill of endless adventure. Each blade is sharpened to cutting edge perfection—to experience a higher standard of performance. Our engineering is a feat of superior craftsmanship—to experience making a statement. Zero Tolerance Knives. We are here so that you can experience it all.

TABLE OF CONTENTS



NEW • 0990 PG. 6



0357 PG. 15



NEW • 0762 PG. 9



0770CF PG. 16



NEW • 0308BLKTS PG. 10



0022 PG. 17



0308 PG. 11



0223 PG. 18



0707 PG. 12



0230 PG. 20



0357BW PG. 14



0235 PG. 21

2021 **ZERO** TOLERANCE KNIVES



0470 PG. 23



0562TI PG.30



0450 PG. 24



0562CF PG. 31



0450CF PG. 25



0393GLCF PG. 33



0452CF PG. 26



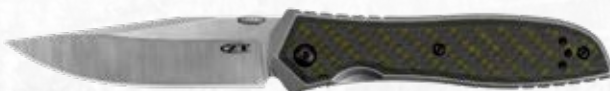
0350TS PG. 34



0462 PG. 27



0350 PG. 35



0640 PG.28



0609 PG.36



All Zero Tolerance knives are proudly built in our Tualatin, Oregon USA manufacturing facility by our most skilled workers. Using only premium materials, they work to ZT's high-performance standards, ensuring each part of every ZT is built with precision and care. The operation of your ZT is conspicuously smooth, and fit-and-finish is second to none. Each one is confidently backed by our Limited Lifetime Warranty.



We produce over one million Zero Tolerance and Kershaw knives each year in our state-of-the-art facility. We ship hundreds of thousands of units to authorized dealers throughout the US. We employ approximately 400 local people and have local partnerships with companies employing hundreds more. We are committed to quality, to community, and to ZT owners everywhere.



ORIGINAL DESIGNS

ZT's in-house design team creates legendary, innovative, and industry-changing Originals. Using the latest technology in our state-of-the-art Tualatin, Oregon USA factory, ZT pushes the boundaries of what a premium knife can offer at the mass production level. ZT Originals offer an impressive combination of style, performance, and fresh ideas. From slim formal carries like the 0707 to beefy folders like the 0308, count on ZT Originals to deliver the best.



Look for this icon designating ZT ORIGINALS.



NEW**0990**

MSRP \$275.00 UPC 087171061115



Based on the award-winning 0999, the 0990 streamlines this legendary design. Despite its skeletonized structure, this ZT is reliably strong thanks to its steel construction. Other elements pay homage to the original 0999, including an exposed "floating bridge" near the top of the handle, carbon fiber scales with a front steel overlay, and cutout windows in the blade and near the pivot. Instead of a ZT logo on the blade itself, the words "Zero Tolerance" are subtly debossed into the back-spacer. The CPM 20CV blade offers excellent edge retention and opens reliably with KVT ball bearings. Once unobtainable for most, the 0990 offers the best way to bring the legend home.

**FEATURES****STEEL**

CPM 20CV, stonewashed finish

HANDLE

Carbon fiber with steel overlay, bead-blasted finish

MECHANISM

Manual opening, KVT ball-bearing system, flipper

LOCK

Inset liner lock

POCKETCLIP

Reversible deep-carry (right/left, tip-up)

DESIGN

ZT Originals

SPECS**OPEN**

7.6 in.

CLOSED

4.4 in.

WEIGHT

2.9 oz.

BLADE LENGTH

3.25 in.

BLADE THICKNESS

0.121 in.





EXPERIENCE PRECISION MACHINING

From imagination to prototype to production, we are built with precision. Every detail is perfected, so you can carry the very best in a premium-grade pocketknife with striking looks and flawless function.



EXPERIENCE **SUPERIOR CRAFTSMANSHIP**

We are built by the most skilled and experienced teams in the ZT factory. We are hand assembled, hand sharpened to a razor edge. We are tested, and tested again. Until we are ready. For you.

NEW

0762



MSRP \$400.00 UPC 087171061054

**FEATURES****STEEL**

CPM 20CV, machine satin grinds, stonewashed flats

HANDLE

Carbon fiber

MECHANISM


Manual opening, KVT ball-bearing system, flipper

LOCK

Titanium Sub-Frame Lock, hardened steel lockbar insert

POCKETCLIP

Reversible titanium (right/left, tip-up)

DESIGNZT Originals 

Packed with innovation, the 0762 delivers a top-of-the-line ZT experience. Its modified sheepsfoot blade and carbon fiber handle scales offer the ultimate medium-size ZT carry. Open the 0762 reliably with the ZT Tuned Detent System (TDS™), allowing the blade to deploy even with pressure on the lockbar. The ZT Sub-Frame Lock secures the blade into place without sacrificing the lightweight benefit of carbon fiber. A two-tone CPM 20CV blade is pleasing to the eye and just as useful during work tasks. The 0762 stands out with an array of aesthetic details, including matching blue-anodized hardware and sleek handle windows. All of these premium features create a ZT showpiece slicer.

SPECS**OPEN**

8.1 in.

CLOSED

4.75 in.

WEIGHT

2.9 oz.

BLADE LENGTH

3.4 in.

BLADE THICKNESS

0.121 in.



0762 EXPERIENCE IT

NEW**0308BLKTS**
 MSRP \$400.00
 UPC 087171060804


For the first time ever, ZT is using a black-oxide BlackWash™ finish with its classic tiger stripe pattern.

The 0308BLKTS offers a beefy 3.7-inch tiger stripe blade with premium CPM 20CV blade steel. The handle features black G10 on the front scale with a titanium back. Both the front and back are heavily 3D machined for an ultra-secure grip. The .25-inch solid pivot features a custom nut that enables it to be adjusted in the field with a 1/2-inch wrench.

The pocketclip hole pattern is compatible with many after-market clips.

FEATURES**STEEL**

CPM 20CV, black-oxide BlackWash™ finish with tiger stripes

HANDLE

Black G10 front; titanium back, black DLC coating

MECHANISM

Manual opening, KVT ball-bearing system, flipper

LOCK

Titanium frame lock, hardened steel lockbar insert

POCKETCLIP

Reversible (right/left, tip-up)

DESIGN

ZT Originals

SPECS**OPEN**

8.9 in.

CLOSED

5.2 in.

WEIGHT

6.9 oz.

BLADE LENGTH

3.75 in.

BLADE THICKNESS

0.156 in.



0308



MSRP \$375.00 UPC 087171058498



FEATURES

STEEL

CPM 20CV, stonewashed finish

HANDLE

Coyote tan G10 front; titanium back, bead-blasted finish

MECHANISM

Manual opening, KVT ball-bearing system, flipper


LOCK

Titanium frame lock, hardened steel lockbar insert

POCKETCLIP

Reversible (right/left, tip-up)

DESIGN

ZT Originals 

For those who prefer their knives on the larger side, we created the new 0308.

The 0308 offers a beefy 3.75-inch blade of premium CPM 20CV. The handle features coyote tan G10 on the front scale with a titanium back. Both front and back are heavily 3D machined for an ultra-secure grip. The .25-inch solid pivot features a custom nut that enables it to be adjusted in the field with a .5-inch wrench.

The 0308 opens with ZT's KVT ball-bearing system and is secured with a sturdy frame lock. The pocketclip is right/left reversible, and the handle hole pattern is compatible with many after-market clips. When you want a big knife, this is the one to get your hands on.



SPECS

OPEN

8.9 in.

CLOSED

5.2 in.

WEIGHT

6.9 oz.

BLADE LENGTH

3.75 in.

BLADE THICKNESS

0.156 in.



0308 EXPERIENCE IT

0707



MSRP \$310.00 UPC 087171059525



Finding the perfect balance between big and small, the 0707 offers something for everyone with its premium looks and performance.

Its sleek profile is comfortable in the hand, while also keeping a low profile in the pocket. Yet its 3.5-inch blade offers a substantial edge for most cutting tasks.

Plus, users can access the blade with ZT's Tuned Detent System (TDS™), which allows the knife to be opened even with pressure on the lockbar.

FEATURES

STEEL

CPM 20CV, stonewashed finish

HANDLE

Carbon fiber front; titanium back, working finish

MECHANISM

Manual opening, KVT ball-bearing system, flipper

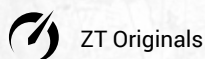
LOCK

Titanium frame lock, hardened steel lockbar insert

POCKETCLIP

Reversible extra-deep-carry (right/left, tip-up)

DESIGN



SPECS

OPEN

8.25 in.

CLOSED

4.6 in.

WEIGHT

2.3 oz.

BLADE LENGTH

3.5 in.

BLADE THICKNESS

0.121 in.





**EXPERIENCE THE BEST
IN QUALITY AND STYLE**

Award-winning design. Ultra-premium materials. Skillful, meticulous craftsmanship. It all comes together so we can bring you the very best, whether you're at work, at home, in the field, on the range, or out for a night on the town.

0357BW



MSRP \$195.00 UPC 087171060040



The 0357BW is an assisted knife, featuring ZT's SpeedSafe® system. Simply pull back on the flipper to easily open the knife every time. The blade locks into place with a beefy and secure 0.080-inch liner lock.

High-end CPM 20CV blade steel provides reliable edge retention and corrosion resistance. Scratches blend in with the blade's BlackWash™ finish.

Black G10 is machined on both the front and back of the handle.

A reversible deep-carry pocket clip allows for ambidextrous carry in the tip-up position.

FEATURES

STEEL

CPM 20CV, black-oxide BlackWash™ finish

HANDLE

Black G10

MECHANISM

SpeedSafe® assisted opening system, flipper

LOCK

Liner lock

POCKETCLIP

Reversible deep-carry (right/left, tip-up)

DESIGN



ZT Originals

SPECS

OPEN

7.625 in.

CLOSED

4.4 in.

WEIGHT

4.3 oz.

BLADE LENGTH

3.25 in.

BLADE THICKNESS

0.121 in.



0357



MSRP \$185.00 UPC 087171058986



FEATURES

STEEL

CPM 20CV, working finish

HANDLE

Black G10

MECHANISM

SpeedSafe® assisted opening system, flipper


LOCK

Liner lock

POCKETCLIP

Reversible deep-carry (right/left, tip-up)

DESIGN

ZT Originals 

The 0357 is premium made simple – a working knife built for tough conditions.

A 3.25-inch drop point blade gives users plenty of edge for cutting tasks. Scratches blend in with the blade's working finish. A beefy 0.080-inch liner lock provides a rock-solid lockup.

After being precision built in ZT's Tualatin, Oregon USA factory, the final product comes in at a value price, perfect for all ZT users.

Whether you're just starting your ZT journey, or are looking to add to your collection, count on the 0357 to get the job done.

SPECS

OPEN

7.625 in.

CLOSED

4.4 in.

WEIGHT

4.3 oz.

BLADE LENGTH

3.25 in.

BLADE THICKNESS

0.121 in.



0770CF



MSRP \$240.00 UPC 087171036175



What we own doesn't define us.
We define what we own.

ZT builds the knives to meet your definition. Like the 0770CF. With its carbon fiber handle, the 0770CF is both an impressively handsome and an impressively lightweight EDC.

It offers the style and performance of the original award-winning 0777, but in a streamlined version. The blade is S35VN powdered metallurgy steel for a razor edge and excellent edge retention.

A decorative pivot adds the finishing touch.

FEATURES

STEEL

CPM S35VN, stonewashed finish

HANDLE

Carbon fiber

MECHANISM

SpeedSafe® assisted opening system, flipper

LOCK

Inset liner lock

POCKETCLIP

Reversible deep-carry (right/left, tip-up)

DESIGN



ZT Originals

SPECS

OPEN

7.5 in.

CLOSED

4.3 in.

WEIGHT

3 oz.

BLADE LENGTH

3.25 in.

BLADE THICKNESS

0.121 in.



0022



MSRP \$250.00 UPC 087171053851



FEATURES

STEEL

CPM 20CV, stonewashed finish

HANDLE

Carbon fiber front; titanium back, stonewashed finish

MECHANISM

Manual opening, KVT ball-bearing system, flipper

LOCK

Titanium frame lock, hardened steel lockbar insert

POCKETCLIP

Reversible (right/left, tip-up)

DESIGN

Tim Galyean

From ZT and Tim Galyean, the 0022 is the most compact ZT ever. But this mini is mighty.

The 1.8-inch clip point blade is ready, willing, and able to take on just about any task you ask of it. Deep finger grooves in the handle ensure you always have a secure grip.

For good looks and reduced weight, the 0022 has a carbon fiber front scale. The titanium trim ring around the pivot and the tube spacer have been anodized in a light blue that looks great against the carbon fiber.

This smaller knife almost disappears in your pocket, making it an exceptionally easy-to-carry option for EDC or back up.



SPECS

OPEN

4.75 in.

CLOSED

3 in.

WEIGHT

1.7 oz.

BLADE

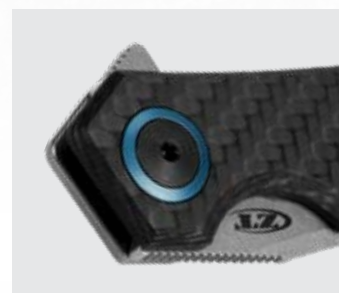
LENGTH

1.8 in.

BLADE

THICKNESS

0.121 in.



0223



MSRP \$375.00 UPC 087171054971



Designed by Tim Galyean, the 0223 takes its inspiration from a classic military knife.

A clip point blade of CPM 20CV steel offers exceptional hardness and wear resistance. Black DLC coating gives it a non-glare finish. The titanium handle has a frame lock for reliable lockup. The 0223 opens with ZT's KVT ball-bearing system. Earth brown G10 handle scales echo the original military knife's stacked leather handle.

A bronze-anodized titanium tube spacer and decorative holes drilled in the blade ricasso add to the subtle details of this handsome knife.



FEATURES

STEEL

CPM 20CV, black DLC coating

HANDLE

Titanium, black DLC coating; earth brown G10 scales

MECHANISM

Manual opening, KVT ball-bearing system, flipper

LOCK

Titanium frame lock, hardened steel lockbar insert

POCKETCLIP

Reversible (right/left, tip-up)

DESIGN

Tim Galyean

SPECS

OPEN

8.6 in.

CLOSED

5 in.

WEIGHT

4.7 oz.

BLADE LENGTH

3.5 in.

BLADE THICKNESS

0.156 in.





**EXPERIENCE A HIGHER
STANDARD OF PERFORMANCE**

Once you get a ZT in your hands, you will understand that we are made to deliver unmatched performance. Put us to work and experience what a higher standard of performance means.

0230



MSRP \$225.00 UPC 087171057057



Minimalist design meets maximum performance in the new 0230 from ZT and Danish designer Jens Anso.

This slipjoint features a double-detent system: two steel detent balls, one on each side of the blade. These hold the blade safely closed for carrying. For controlled open and close, the 0230 also has a half-open position.

The blue anodized aluminum backspacer has an integrated lanyard attachment. And instead of a logo on the blade, we put our name on the spine. Combine that with a 20CV sheepfoot blade and ultra lightweight carbon fiber handle for a simple, yet extraordinary knife.



FEATURES

STEEL

CPM 20CV, stonewashed finish

HANDLE

Carbon fiber

MECHANISM

Manual opening, slipjoint

DESIGN

Jens Anso

SPECS

OPEN

6.2 in.

CLOSED

3.7 in.

WEIGHT

1.8 oz.

BLADE LENGTH

2.6 in.

BLADE THICKNESS

0.121 in.



0235



MSRP \$225.00 UPC 087171059563



FEATURES

STEEL

CPM 20CV, stonewashed finish

HANDLE

Carbon fiber

MECHANISM

Manual opening, slipjoint

POCKETCLIP

Reversible extra-deep-carry (right/left, tip-up)

DESIGN

Jens Anso

From ZT and Danish designer Jens Anso, the new 0235 expands on the original 0230, offering a high-class, premium performance carry.

The new spear point blade is opened with a double detent system: two steel detent balls, one on each side of the blade. They hold the blade safely closed for carrying. For controlled open and close, the 0235 also has a half-open position.

An extra-deep-carry clip provides a new way of carrying this sleek, simple, and extraordinary design.

SPECS

OPEN

6.3 in.

CLOSED

3.8 in.

WEIGHT

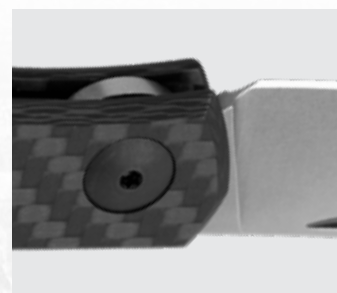
1.8 oz.

BLADE LENGTH

2.6 in.

BLADE THICKNESS

0.121 in.





EXPERIENCE ULTRA-PREMIUM

High-performance steel. Titanium. Carbon fiber. These ultra-premium materials are matched only by our ultra-premium style, designed to keep you always ahead of the curve.

0470



MSRP \$325.00 UPC 087171052410

**FEATURES****STEEL**

CPM 20CV, machine satin grinds, stonewashed flats

HANDLE

Titanium, bead-blasted finish; marbled carbon fiber insert

MECHANISM

Manual opening, KVT ball-bearing system, flipper

LOCK

Titanium frame lock, hardened steel lockbar insert

POCKETCLIP

Reversible titanium (right/left, tip-up)

DESIGN

Dmitry Sinkevich

The 0470, from ZT and Dmitry Sinkevich, will proudly take its place in your collection. Not that the 0470 is a safe queen. Far from it. It's a highly practical, easy-to-EDC design that handles a wide range of tasks and looks good doing it.

The blade is CPM 20CV high-chromium stainless steel. The handle is titanium with an eye-catching marbled carbon fiber insert, which ZT leaves with a matte finish for an intriguing and sophisticated look.

A black anodized-aluminum backspacer and a titanium clip complete the look of this refined pocketknife.

SPECS**OPEN**

7.8 in.

CLOSED

4.4 in.

WEIGHT

3.2 oz.

BLADE**LENGTH**

3.4 in.

BLADE**THICKNESS**

0.121 in.



0470 EXPERIENCE IT

0450



MSRP \$235.00 UPC 087171039305



A compact version of an award-winning ZT-Dmitry Sinkevich design, the 0450 is right for the office, outdoors—or wherever your adventures take you.

It features premium materials and looks that will draw admiring glances. The S35VN powdered metallurgy blade offers a razor edge and easy sharpening.

The knife opens smooth as butter with our KVT ball-bearing opening system. The lightweight-yet-strong titanium handles give the 0450 a sleek look and provide a sturdy titanium frame lock.

FEATURES

STEEL

CPM S35VN, machine satin grinds, stonewashed flats

HANDLE

Titanium, stonewashed finish

MECHANISM

Manual opening, KVT ball-bearing system, flipper

LOCK

Titanium frame lock, hardened steel lockbar insert

POCKETCLIP

Reversible (right/left, tip-up)

DESIGN

Dmitry Sinkevich



SPECS

OPEN

7.4 in.

CLOSED

4.1 in.

WEIGHT

2.9 oz.

BLADE LENGTH

3.25 in.

BLADE THICKNESS

0.121 in.



0450CF



MSRP \$245.00 UPC 087171041094



FEATURES

STEEL

CPM S35VN, black DLC coating

HANDLE

Carbon fiber front; titanium back, black DLC coating

MECHANISM

Manual opening, KVT ball-bearing system, flipper

LOCK

Titanium frame lock, hardened steel lockbar insert

POCKETCLIP

Reversible (right/left, tip-up)

DESIGN

Dmitry Sinkevich

The Zero Tolerance 0450CF has a dark, sophisticated look.

It features a stronger-than-steel carbon fiber front handle and black Diamond-Like Carbon (DLC) coating on its S35VN blade.

This smaller, gentlemanly ZT opens simply with ZT's KVT ball-bearing opening.

Yet there is one thing that's a bit less subtle about the 0450CF: the two emerald green, custom-machined and anodized aluminum tube spacers that add a touch of "wow" to this ZT.



SPECS

OPEN

7.4 in.

CLOSED

4.1 in.

WEIGHT

2.45 oz.

BLADE LENGTH

3.25 in.

BLADE THICKNESS

0.121 in.



0450CF EXPERIENCE IT

0452CF



MSRP \$300.00 UPC 087171039633



Here's technology every bit as vital as your smart phone: your EDC knife. Open a package, section an apple, solve a coworker's cardboard box problem, and look badass doing it with the 0452CF, designed by Dmitry Sinkevich.

The tech here is the advanced-formula CPM S35VN steel and our KVT opening system. The powdered steel is extremely fine-grained so it can be sharpened to a razor edge. Added niobium and nitrogen help it resist chipping.

Caged ball bearings in the KVT system make the knife smooth and easy to open.



FEATURES

STEEL

CPM S35VN, machine satin grinds, stonewashed flats

HANDLE

Carbon fiber front; titanium back, stonewashed finish

MECHANISM

Manual opening, KVT ball-bearing system, flipper

LOCK

Titanium frame lock, hardened steel lockbar insert

POCKETCLIP

Reversible deep-carry (right/left, tip-up)

DESIGN

Dmitry Sinkevich

SPECS

OPEN

9.3 in.

CLOSED

5.2 in.

WEIGHT

4.3 oz.

BLADE LENGTH

4.1 in.

BLADE THICKNESS

0.156 in.



0462



MSRP \$325.00 UPC 087171052328



FEATURES

STEEL

CPM 20CV, machine satin grinds, stonewashed flats

HANDLE

Red carbon fiber front; titanium back, stonewashed finish

MECHANISM

Manual opening, KVT ball-bearing system, flipper

LOCK

Titanium frame lock, hardened steel lockbar insert

POCKETCLIP

Reversible titanium (right/left, tip-up)

DESIGN

Dmitry Sinkevich

This super-sized version of the 0460 features an upswept blade of CPM 20CV for toughness and wear resistance and a colored carbon fiber front scale with titanium back.

And while the first thing that will catch your notice about this big knife is that sweeping blade and handle curve, we urge you to look closer.

ZT has added details to the interior of the 0462's handle that are just waiting to be discovered.



SPECS

OPEN

8.9 in.

CLOSED

5.25 in.

WEIGHT

3.7 oz.

BLADE LENGTH

3.7 in.

BLADE THICKNESS

0.156 in.



0640



MSRP \$310.00 UPC 087171053844



This ZT-Ernest Emerson collaboration provides both practicality and style.

The clip point blade is CPM 20CV high-chromium stainless steel. This powdered metallurgy tool steel has a high volume of vanadium carbides for exceptional wear resistance and a truly long-lasting edge. The highest level of chromium of any high-vanadium steel gives it excellent corrosion resistance as well.

The handle is titanium with a green carbon fiber overlay on both sides of the handle.

This fully manual knife opens one-handed with a thumb disk.



FEATURES

STEEL

CPM 20CV, machine satin grinds, stonewashed flats

HANDLE

Titanium, stonewashed finish; green carbon fiber overlay

MECHANISM

Manual opening, brass washers, thumb disk

LOCK

Titanium frame lock, hardened steel lockbar insert

POCKETCLIP

Reversible titanium (right/left, tip-up)

DESIGN

Ernest Emerson

SPECS

OPEN

8.5 in.

CLOSED

4.75 in.

WEIGHT

4.4 oz.

BLADE LENGTH

3.75 in.

BLADE THICKNESS

0.156 in.





EXPERIENCE MAKING A STATEMENT

We are born from the imagination of legendary designers and built to bring you the finest in design, materials, and performance. Put a ZT to work, and you're making a statement about what you value: the very best.

0562TI



MSRP \$350.00 UPC 087171054117



The 0562TI features Rick Hinderer's exclusive Hinderer "slicer" grind. This flat-ground edge provides both slicing efficiency and a tough point.

CPM 20CV powdered steel offers high wear and corrosion resistance. Zero Tolerance sharpens it to a hair-popping edge that holds for a long time, even under hard use.

The knife opens with a flipper and our smooth KVT ball-bearing opening system. The handle is pure titanium with a handsome stonewashed finish. Machining on the inside of the front handle scales relieves weight and makes the 0562TI an easy EDC.

FEATURES

STEEL

CPM 20CV, machine satin grinds, stonewashed flats

HANDLE

Titanium, stonewashed finish

MECHANISM

Manual opening, KVT ball-bearing system, flipper

LOCK

Titanium frame lock, lockbar stabilizer

POCKETCLIP

Reversible deep-carry (right/left, tip-up)

DESIGN

Rick Hinderer

SPECS

OPEN

8.3 in.

CLOSED

4.8 in.

WEIGHT

5.3 oz.

BLADE LENGTH

3.5 in.

BLADE THICKNESS

0.156 in.



0562CF



MSRP \$325.00 UPC 087171037370



FEATURES

STEEL

CPM 20CV, machine satin grinds, stonewashed flats

HANDLE

Carbon fiber front; titanium back, stonewashed finish

MECHANISM

Manual opening, KVT ball-bearing system, flipper

LOCK

Titanium frame lock, lockbar stabilizer

POCKETCLIP

Reversible deep-carry (right/left, tip-up)

DESIGN

Rick Hinderer

The 0562CF features the Rick Hinderer flat-ground “slicer” grind for slicing efficiency and a tough point for piercing. Plus, this ZT’s handle includes a carbon fiber front scale and stonewashed titanium back.

The knife opens with a flipper and moves out of the handle on our smooth KVT ball-bearing opening system. A washer with caged ball bearings surrounds the pivot and makes opening the knife nearly frictionless; just pull back on the flipper and the 0562CF is ready for action.

SPECS

OPEN

8.3 in.

CLOSED

4.8 in.

WEIGHT

5.5 oz.

BLADE

LENGTH

3.5 in.

BLADE

THICKNESS

0.156 in.



0562CF EXPERIENCE IT



EXPERIENCE THE CHALLENGE OF A HARD DAY'S WORK

The solid, reliable feel of a ZT in your hand means confidence in your tools, confidence in your work. We're built to take on the toughest challenge. Every day, every time. Just like you.

0393GLCF



MSRP \$350.00 UPC 087171055190



FEATURES

STEEL

CPM 20CV, working finish

HANDLE

Titanium, working finish; glow-in-the-dark carbon fiber overlay

MECHANISM

Manual opening, KVT ball-bearing system, flipper

LOCK

Titanium frame lock, hardened steel lockbar insert

POCKETCLIP

Reversible (right/left, tip-up)

DESIGN

Rick Hinderer

The 0393GLCF's handle is titanium with Rick Hinderer's hard-use "working" finish—a no-nonsense finish that hides scuffs and scratches. By day, the contoured, carbon fiber overlay gives the 0393GLCF a touch of style. But by night, the 0393GLCF reveals another side of its character: glow-in-the-dark carbon fiber.

The 0393GLCF features a harpoon-style version of Rick Hinderer's "spanto" blade in CPM 20CV. For fast and easy opening, the 0393GLCF's blade moves smoothly out of the handle with the KVT ball-bearing system and a flipper.

SPECS

OPEN

8.25 in.

CLOSED

4.75 in.

WEIGHT

5 oz.

BLADE LENGTH

3.5 in.

BLADE THICKNESS

0.156 in.



0393GLCF EXPERIENCE IT

0350TS



MSRP \$205.00 UPC BOX 087171034034



The 0350TS has everything our 0350 has, plus a tiger-striped Tungsten DLC blade.

The blade itself is built of CPM S30V stainless steel. S30V is extremely durable, corrosion resistant, and wear resistant. In addition to providing a camouflaged surface, the DLC coating offers additional blade hardness and reduces friction.

Textured black G10 handle scales offer a secure grip and excellent mechanical strength.

FEATURES

STEEL

CPM S30V, Tungsten DLC tiger stripe coating

HANDLE

Textured G10, matte black

MECHANISM

SpeedSafe® assisted opening system, flipper

LOCK

Liner lock

POCKETCLIP

4-position (right/left, tip-up/down)

DESIGN

Ken Onion



SPECS

OPEN

7.6 in.

CLOSED

4.6 in.

WEIGHT

6.2 oz.

BLADE LENGTH

3.25 in.

BLADE THICKNESS

0.121 in.



0350



MSRP \$195.00 UPC 087171003504

**FEATURES****STEEL**

CPM S30V, Tungsten DLC coating

HANDLE

Textured G10, matte black

MECHANISM

SpeedSafe® assisted opening system, flipper

LOCK

Liner lock

POCKETCLIP

4-position (right/left, tip-up/down)

DESIGN

Ken Onion

The 0350 packs a lot of features into an EDC-perfect size. It features the SpeedSafe® assisted opening system. Deploy the blade quickly and easily, even in gloves, using the ambidextrous flipper.

The ZT 0350's blade is CPM S30V stainless steel with non-reflective black Tungsten DLC (Diamond-Like Carbon) coating. This high-performance S30V blade is paired with textured black G10 scales for a secure grip and excellent mechanical strength even under the roughest conditions.

**SPECS****OPEN**

7.6 in.

CLOSED

4.6 in.

WEIGHT

6.2 oz.

BLADE**LENGTH**

3.25 in.

BLADE**THICKNESS**

0.121 in.



0609



MSRP \$325.00 UPC 087171051376



The 0609 is a smaller, even more carry-ready version of the Factory Custom 0606CF from ZT, RJ Martin, and Matt Martin.

Like the original, it offers a clean, streamlined look with detailed handle machining. It also features RJ's oversized, See-Through Pivot for visual interest—and smooth, easy KVT ball-bearing opening.

The 3.4-inch blade is CPM 20CV for enhanced toughness and resistance to edge chipping. The handle is light-yet-strong titanium anodized in an attractive bronze.

FEATURES

STEEL

CPM 20CV, machine satin grinds, stonewashed flats

HANDLE

Titanium, bronze anodized

MECHANISM

Manual opening, KVT ball-bearing system, flipper

LOCK

Titanium frame lock, hardened steel lockbar insert

POCKETCLIP

Reversible (right/left, tip-up)

DESIGN

RJ Martin

SPECS

OPEN

7.625 in.

CLOSED

4.25 in.

WEIGHT

3.5 oz.

BLADE LENGTH

3.4 in.

BLADE THICKNESS

0.121 in.





EXPERIENCE ATTENTION TO DETAIL

Skilled ZT workers pay attention to the fine details and bring us to life. We often include custom hardware, hidden weight-relieving pockets, and stylish 3D machining, pushing us from a great design to an extra-premium ZT.



EXPERIENCE IT ALL

Precision. Performance. Craftsmanship. Quality and style. We're built to take on the challenge of whatever life throws at us. From a day on the job to your next adventure, we're built so that you can experience it all every time you carry a ZT.

**NEW ZT NECK GAITER**

GAITERZT	087171061023	MSRP \$10.99
----------	--------------	--------------

- 92% polyester, 8% spandex
- One size fits most
- 9.8 in. × 19.7 in.

**NEW ZT CHALLENGE COIN**

ZTCHALLENGECOIN20	087171061825	MSRP \$9.99
-------------------	--------------	-------------

- Zinc alloy with nickel plating
- Diameter: 1.75 in.
- Weight: 0.9 oz.

**ZT CAP – FLAG**

CAPZT201	087171059167	MSRP \$25.00
----------	--------------	--------------

- Flat brim visor
- Adjustable closure

**ZT CAP – TACTICAL**

CAPTZT181	087171053257	MSRP \$20.00
-----------	--------------	--------------

- Adjustable Velcro® back
- Utility loops, no top button

**ZT BEANIE**

BEANIEZT18	087171053295	MSRP \$15.00
------------	--------------	--------------

- Acrylic knit with knit-in logo
- Two-tone: charcoal outside, gray inside



NEW

ZT T-SHIRT - 0357

MSRP
\$25.00

S	SHIRTZT2021S	087171061832
M	SHIRTZT2021M	087171061849
L	SHIRTZT2021L	087171061856
XL	SHIRTZT2021XL	087171061863
XXL	SHIRTZT2021XXL	087171061870



ZT T-SHIRT - FLAG

MSRP
\$25.00

S	SHIRTZT201S	087171059099
M	SHIRTZT201M	087171059105
L	SHIRTZT201L	087171059112
XL	SHIRTZT201XL	087171059129
XXL	SHIRTZT201XXL	087171059136



ZT T-SHIRT - CHARCOAL

MSRP
\$20.00

S	SHIRTZT182S	087171053059
M	SHIRTZT182M	087171053066
L	SHIRTZT182L	087171053073
XL	SHIRTZT182XL	087171053080
XXL	SHIRTZT182XXL	087171053097



ZT KNIFE STORAGE BAG

ZT997	087171040769	MSRP \$40.00
-------	--------------	--------------

- Accommodates up to 18 folding knives
- Material: nylon siding, nylon straps
- 8-pocket removable center section



ZT SINGLE-KNIFE POUCH

POUCHZT	087171059174	MSRP \$20.00
---------	--------------	--------------

- Holds any ZT folder ($\leq 5.25"$)
- Zippered Kevlar case



ZT MUG – FLAG

MUGZT	087171059150	MSRP \$18.00
-------	--------------	--------------

- Single wall ceramic mug
- White exterior, gray interior
- 12 fl. oz. capacity



ZT COUNTER MAT – FLAG

MATZT20	087171059143	MSRP \$20.00
---------	--------------	--------------

- Water-resistant surface
- Foam backing
- 15 in. x 10 in.



SINGLE-KNIFE BLADE STAND

DISPLAYZTB14	087171040516	MSRP \$1.00
--------------	--------------	-------------

- Durable acrylic design
- Holds a single knife blade



SINGLE-KNIFE STAND

DISPLAYZT114	087171040523	MSRP \$3.00
--------------	--------------	-------------

- Durable acrylic design
- Holds a single open knife



TRIPLE-KNIFE STAND

DISPLAYZT314	087171040530	MSRP \$5.00
--------------	--------------	-------------

- Durable acrylic design
- Holds three open knives



ZT KNIFE LANYARD

ZTLANYARD	087171040493	MSRP \$20.00
-----------	--------------	--------------

- Two-color paracord
- Custom ZT bead
- Made in USA



ZT PVC VELCRO PATCH

ZTPATCH17	087171049236	MSRP \$5.00
-----------	--------------	-------------

- Velcro® back
- 3.25 in. × 1.125 in.



ZT WINDOW CLING

ZTCLING17	087171049250	MSRP \$3.00
-----------	--------------	-------------

- Transparent background
- Sunlight-color-safe
- 6 in. × 2 in.



**EXPERIENCE A PARTNER
IN ADVENTURE**

Wherever you go, whatever you do, we're there for you. We're ready to bring the best in innovative styling, premium materials, precision manufacturing, and meticulous craftsmanship to your next adventure.



LIMITED LIFETIME WARRANTY

Zero Tolerance knives from Kai USA Ltd. carry a limited warranty for the lifetime of the original owner, except when stated otherwise. We guarantee our knives against manufacturing defects in material and construction and to perform as advertised when properly used and maintained. The Limited Lifetime Warranty is non-transferable and does not extend to normal signs of wear, rust, damage or breakage due to improper use, improper maintenance, accidents, loss, or theft. This warranty is void on products that have been modified in any way. Any product we determine to be defective will be repaired or replaced solely at our discretion. To receive warranty repair or replacement, the owner must send the product to be evaluated by Kai USA Warranty Services in our Tualatin, Oregon headquarters. In addition to the provisions of this warranty, the owner may also have other rights that can vary by state. No other warranties are implied or expressed other than what is specifically stated here. Kai USA Ltd. reserves the right to determine what constitutes normal wear, improper use/maintenance, and modification.

If you accidentally break your ZT folder's blade, we can replace it for just \$30, pending material availability. Blades that break due to a manufacturing defect will still be replaced under warranty, free of charge. Blades marked "XXXX" are factory seconds and are not eligible for replacement.



LIABILITY DISCLAIMER & WARNING

Zero Tolerance knives are intended and sold for legitimate everyday carrying, sporting, and professional purposes only. The purchase, use, and ownership of knives are subject to a wide variety of federal, state, and local laws and regulations. Always comply with all laws and regulations in effect in your area. Due to the complexity and constantly changing nature of these laws and regulations, it is the responsibility of the buyer to investigate and comply with the laws and regulations that apply in his or her specific area. You, and not Kai USA Ltd., are solely responsible for any claims resulting from violation of these laws and/or regulations.

Knives are extremely sharp tools and should only be used or handled with the utmost care and caution. Any use other than cutting (such as prying or twisting) is considered misuse and abuse—and will void your warranty. Zero Tolerance knives/Kai USA Ltd. is not responsible for any injuries resulting from misuse or abuse of the product.

Do not use any ZT knife as a throwing knife or a stabbing device. Throwing knives and knives developed for stabbing have a distinctly different design and function. ZT knives are not intended for throwing or stabbing; they are designed for cutting purposes only.

We reserve the right to change shipping terms, specifications, materials, discontinue products, adjust blade replacement price and availability at any time, without notice.



ZT REPLACEMENT PARTS

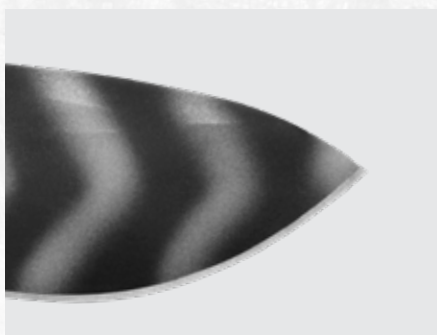
In addition to a selection of free replacement parts, you can get replacements for other ZT parts as well. However, these premium ZT parts are more costly to manufacture, so we charge a small fee. Please check our website for details on the parts currently available.

STEEL CHART



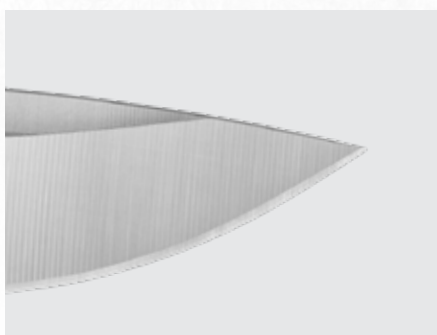
CRUCIBLE CPM 20CV

This powdered metallurgy tool steel has a high volume of vanadium carbides for exceptional wear resistance and a long-lasting edge. The highest level of chromium of any high-vanadium steel gives it excellent corrosion resistance and polishability as well.



CRUCIBLE CPM S30V

All-around premium knife steel that takes and holds an edge extremely well; also extremely tough and wear resistant.



CRUCIBLE CPM S35VN

A stainless steel that offers enhanced toughness over S30V without loss of wear resistance. In knife blades, S35VN resists edge chipping and provides excellent edge retention.

STEEL	CARBON (C)	CHROMIUM (Cr)	MOLYBDENUM (Mo)	VANADIUM (V)	TUNGSTEN (W)	COBALT (Co)	NICKEL (Ni)	MANGANESE (Mn)	SILICON (Si)	SULPHUR (S)	PHOSPHORUS (P)	COPPER (Cu)	NIObIUM (Nb)	NITROGEN (N)	HRC
CPM 20CV	1.9 %	20.0 %	1.0 %	4.0 %	0.6 %	-	-	-	-	-	-	-	-	-	60-62
CPM S30V	1.45 %	14.0 %	2.0 %	4.0 %	-	-	-	-	-	-	-	-	-	0.2 %	57-59
CPM S35VN	1.34 %	14.0 %	2.0 %	3.0 %	0.4 %	0 to 0.5 %	0.1 to 0.4 %	0.5 %	0.5 %	0.03 %	0.03 %	-	-	0 to 0.13 %	60-62

WE RESERVE THE RIGHT TO CHANGE MATERIALS WITHOUT NOTICE

ZTLITCAT2021
Printed in USA



ZERO TOLERANCE KNIVES



ZTKNIVES.COM

18600 SW Teton Ave. • Tualatin, OR 97062
800.325.2891 • ZTKNIVES.COM