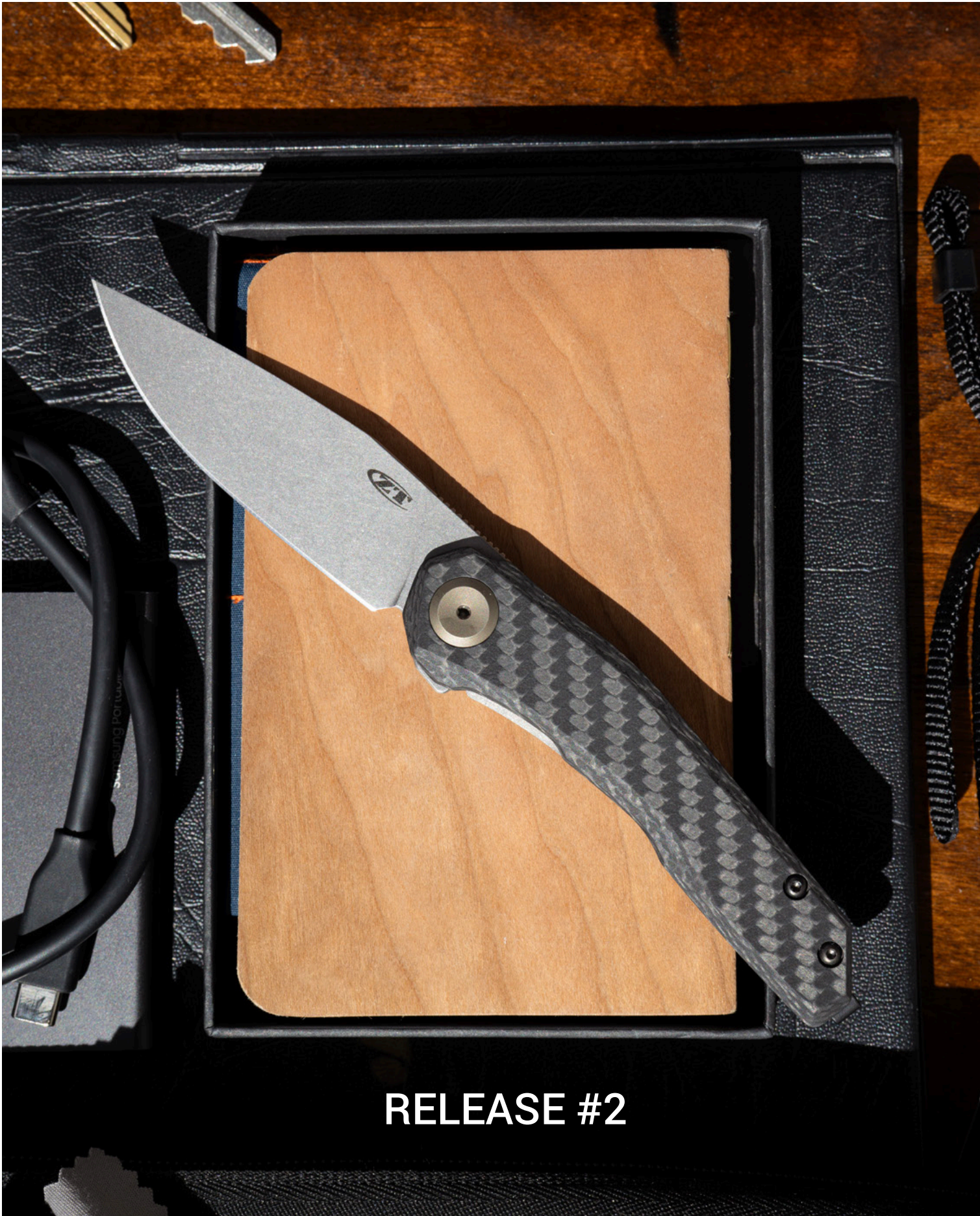


2023



RELEASE #2





EXPERIENCE IT







We are forged in fire and solidly built—to experience the challenges of a hard day's work. We're fully loaded and machined to precision—to experience the thrill of endless adventure. Each blade is sharpened to cutting edge perfection—to experience a higher standard of performance. Our engineering is a feat of superior craftsmanship—to experience making a statement. Zero Tolerance Knives. We are here so that you can experience it all.



# 2023 **ZERO** TOLERANCE KNIVES

## TABLE OF CONTENTS



**NEW • 0545** PG. 07



**0357** PG. 13



**NEW • 0006** PG. 08



**0357BW** PG. 14



**0308BLKTS** PG. 10



**0990** PG. 16



**0308** PG. 11



**0230** PG. 18



**0770CF** PG. 12



**0235** PG. 19



**0450CF** PG. 21**0562TI** PG.28**0450** PG. 22**0562CF** PG. 29**0462** PG. 23**0022** PG. 31**0452CF** PG.24**0350TS** PG. 32**0393GLCF** PG. 27**0350** PG. 33**GEAR SECTION**

PG.34

**WARRANTY**

PG.38

**STEEL CHART**

PG.39

**PROP 65 INFO**

PG.40





All Zero Tolerance knives are proudly built in our Tualatin, Oregon USA manufacturing facility by our most skilled workers. Using only premium materials, they work to ZT's high-performance standards, ensuring each part of every ZT is built with precision and care. The operation of your ZT is conspicuously smooth, and fit-and-finish is second to none. Each one is confidently backed by our Limited Lifetime Warranty.



We produce over one million Zero Tolerance and Kershaw knives each year in our state-of-the-art facility. We ship hundreds of thousands of units to authorized dealers throughout the US. We employ approximately 400 local people and have local partnerships with companies employing hundreds more. We are committed to quality, to community, and to ZT owners everywhere.







# ORIGINAL DESIGNS

ZT's in-house design team creates legendary, innovative, and industry-changing Originals. Using the latest technology in our state-of-the-art Tualatin, Oregon USA factory, ZT pushes the boundaries of what a premium knife can offer at the mass production level. ZT Originals offer an impressive combination of style, performance, and fresh ideas. From slim formal carries like the 0545 to beefy folders like the 0308, count on ZT Originals to deliver the best.



Look for this icon designating ZT ORIGINALS.







# **EXPERIENCE LUXURY CARRY**

Built with style and premium design, many ZTs are the perfect companion for formal occasions. With slim profiles and light carbon fiber handle scales, they fit comfortably in a sharp pair of slacks.

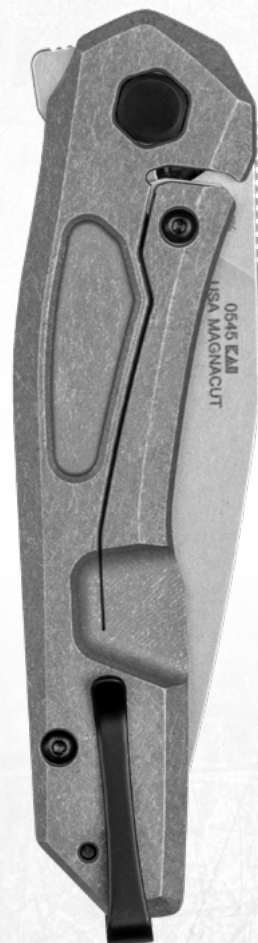


NEW

0545



MSRP \$340.00 UPC 087171065724



## FEATURES

## STEEL

CPM MagnaCut, stonewashed finish

## HANDLE

Carbon fiber front; titanium back, working finish

## MECHANISM

Manual opening, KVT ball-bearing system with washers and flipper

## LOCK

Titanium frame lock, hardened steel lockbar insert

## POCKETCLIP

Reversible extra-deep-carry (right/left, tip-up)

## DESIGN

ZT Originals



Work, formal, or anywhere in-between, experience the 0545. Its slimness and carbon fiber front handle offer a comfortable and light carry. But the manual KVT folder is also sized appropriately for serious cutting tasks. Even better, the blade measures at an extra slicey 0.09 inches. Its CPM MagnaCut blade steel is balanced with premium edge retention, toughness, and corrosion resistance.

The minimal deep-carry pocket clip is reversible for left or right carry. And its pivot screw is anodized with a stylish bronze finish. Whether you're carrying it in jeans or slacks, the 0545 makes the job easy.

## SPECS

## OPEN

7.5 in.

## CLOSED

4.3 in.

## WEIGHT

2 oz.

## BLADE LENGTH

3.2 in.

## BLADE THICKNESS

0.09 in.



0545 EXPERIENCE IT



NEW

0006



MSRP \$420.00    UPC 087171064567



Whether it's for survival, the great outdoors, or summer projects, the military inspired 0006 is the answer. Though it pays homage to the original ZT-9 with a steel guard, this full-tang beast is not a bayonet. Instead, this versatile ZT fits snugly in a durable Kydex sheath for travel.

Named after its 6-inch blade, the 0006 uses CPM 3V, a tough tool steel that resists edge chipping during the hardest work tasks. ZT also added a clear Cerakote coating for greater durability. For grip, the rounded G10 handle profile fills the hand without being too big. Choke up on the aggressive jimping with or without gloves for greater control. When ZT makes a fixed blade, there's nothing else like it. The 0006 is no exception.



FEATURES

STEEL

CPM 3V, bead-blasted finish with clear Cerakote coating

HANDLE

Olive G10

FIXED BLADE

Full-tang construction

SHEATH

Kydex sheath with retention strap, drainage hole, and removable belt strap

DESIGN



SPECS

OVERALL

10.7 in.

WEIGHT

10.3 oz.

BLADE LENGTH

6 in.

BLADE THICKNESS

0.19 in.



0006 EXPERIENCE IT





## EXPERIENCE THE CHALLENGE OF A HARD DAY'S WORK

The solid, reliable feel of a ZT in your hand means confidence in your tools, confidence in your work. We're built to take on the toughest challenge. Every day, every time. Just like you.



# 0308BLKTS



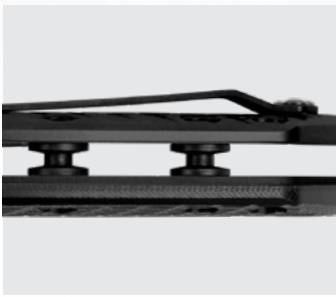
MSRP \$440.00    UPC 087171060804



For the first time ever, ZT is using a black-oxide BlackWash™ finish with its classic tiger stripe pattern.

The 0308BLKTS offers a beefy 3.7-inch tiger stripe blade with premium CPM 20CV blade steel. The handle features black G10 on the front scale with a titanium back. Both the front and back are heavily 3D machined for an ultra-secure grip. The .25-inch solid pivot features a custom nut that enables it to be adjusted in the field with a 1/2-inch wrench.

The pocketclip hole pattern is compatible with many after-market clips.



## FEATURES

### STEEL

CPM 20CV, black-oxide BlackWash™ finish with tiger stripes

### HANDLE

Black G10 front; titanium back, black DLC coating

### MECHANISM

Manual opening, KVT ball-bearing system, flipper

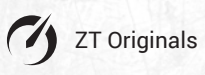
### LOCK

Titanium frame lock, hardened steel lockbar insert

### POCKETCLIP

Reversible (right/left, tip-up)

### DESIGN



## SPECS

### OPEN

8.9 in.

### CLOSED

5.2 in.

### WEIGHT

6.9 oz.

### BLADE LENGTH

3.75 in.

### BLADE THICKNESS

0.156 in.





0308



MSRP \$415.00 UPC 087171058498



## FEATURES

## STEEL

CPM 20CV, stonewashed finish

## HANDLE

Coyote tan G10 front; titanium back, bead-blasted finish

## MECHANISM

Manual opening, KVT ball-bearing system, flipper


## LOCK

Titanium frame lock, hardened steel lockbar insert

## POCKETCLIP

Reversible (right/left, tip-up)

## DESIGN

ZT Originals 

For those who prefer their knives on the larger side, we created the 0308.

The 0308 offers a beefy 3.75-inch blade of premium CPM 20CV. The handle features coyote tan G10 on the front scale with a titanium back. Both front and back are heavily 3D machined for an ultra-secure grip. The .25-inch solid pivot features a custom nut that enables it to be adjusted in the field with a 1/2-inch wrench.

The 0308 opens with ZT's KVT ball-bearing system and is secured with a sturdy frame lock. The pocketclip is right/left reversible, and the handle hole pattern is compatible with many after-market clips. When you want a big knife, this is the one to get your hands on.



## SPECS

## OPEN

8.9 in.

## CLOSED

5.2 in.

## WEIGHT

6.9 oz.

## BLADE LENGTH

3.75 in.

## BLADE THICKNESS

0.156 in.





# 0770CF



MSRP \$280.00    UPC 087171036175



What we own doesn't define us.  
We define what we own.

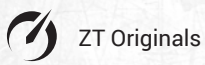
ZT builds the knives to meet your definition. Like the 0770CF. With its carbon fiber handle, the 0770CF is both an impressively handsome and an impressively lightweight EDC.

It offers the style and performance of the original award-winning 0777, but in a streamlined version. The blade is S35VN powdered metallurgy steel for a razor edge and excellent edge retention.

A decorative pivot adds the finishing touch.

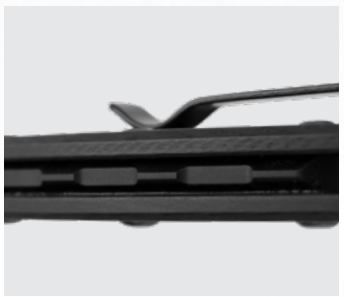
## FEATURES

- STEEL**  
CPM S35VN, stonewashed finish
- HANDLE**  
Carbon fiber
- MECHANISM**  
Assisted opening, flipper
- LOCK**  
Inset liner lock
- POCKETCLIP**  
Reversible deep-carry (right/left, tip-up)
- DESIGN**



## SPECS

- OPEN**  
7.5 in.
- CLOSED**  
4.3 in.
- WEIGHT**  
3 oz.
- BLADE LENGTH**  
3.25 in.
- BLADE THICKNESS**  
0.121 in.





# 0357



MSRP \$215.00 UPC 087171058986



## FEATURES

### STEEL

CPM 20CV, working finish

### HANDLE

Black G10

### MECHANISM

Assisted opening, flipper


### LOCK

Liner lock

### POCKETCLIP

Reversible deep-carry (right/left, tip-up)

### DESIGN

ZT Originals 

The 0357 is premium made simple – a working knife built for tough conditions.

A 3.25-inch drop point blade gives users plenty of edge for cutting tasks. Scratches blend in with the blade's working finish. A beefy 0.080-inch liner lock provides a rock-solid lockup.

After being precision built in ZT's Tualatin, Oregon USA factory, the final product comes in at a value price, perfect for all ZT users.

Whether you're just starting your ZT journey, or are looking to add to your collection, count on the 0357 to get the job done.

## SPECS

### OPEN

7.625 in.

### CLOSED

4.4 in.

### WEIGHT

4.3 oz.

### BLADE LENGTH

3.25 in.

### BLADE THICKNESS

0.121 in.



**0357** EXPERIENCE IT



# 0357BW



MSRP \$225.00    UPC 087171060040



The 0357BW is premium made simple – a working knife built for tough conditions. Simply pull back on the flipper to easily open the knife every time. The blade locks into place with a beefy and secure 0.080-inch liner lock.

High-end CPM 20CV blade steel provides reliable edge retention and corrosion resistance. Scratches blend in with the blade's BlackWash™ finish.

Black G10 is machined on both the front and back of the handle.

A reversible deep-carry pocket clip allows for ambidextrous carry in the tip-up position.



## FEATURES

### STEEL

CPM 20CV, black-oxide BlackWash™ finish

### HANDLE

Black G10

### MECHANISM

Assisted opening, flipper

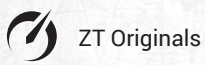
### LOCK

Liner lock

### POCKETCLIP

Reversible deep-carry (right/left, tip-up)

### DESIGN



## SPECS

### OPEN

7.625 in.

### CLOSED

4.4 in.

### WEIGHT

4.3 oz.

### BLADE LENGTH

3.25 in.

### BLADE THICKNESS

0.121 in.









0990



MSRP \$315.00 UPC 087171061115



Based on the award-winning 0999, the 0990 streamlines this legendary design. This ZT is reliably strong thanks to its steel construction. Other elements pay homage to the original 0999, including an exposed “floating bridge” near the top of the handle, carbon fiber scales with a front steel overlay, and cutout windows in the blade and near the pivot.

Instead of a ZT logo on the blade itself, the words “Zero Tolerance” are subtly debossed into the backspacer. The CPM 20CV blade offers excellent edge retention and opens reliably with KVT ball bearings. Once unobtainable for most, the 0990 offers the best way to bring the legend home.



**FEATURES**

**STEEL**

CPM 20CV, stonewashed finish

**HANDLE**

Carbon fiber with steel overlay, bead-blasted finish

**MECHANISM**

Manual opening, KVT ball-bearing system, flipper

**LOCK**

Inset liner lock

**POCKETCLIP**

Reversible deep-carry (right/left, tip-up)

**DESIGN**



**SPECS**

**OPEN**

7.6 in.

**CLOSED**

4.4 in.

**WEIGHT**

2.9 oz.

**BLADE LENGTH**

3.25 in.

**BLADE THICKNESS**

0.121 in.







## EXPERIENCE PRECISION MACHINING

From imagination to prototype to production, we are built with precision. Every detail is perfected, so you can carry the very best in a premium-grade knife with striking looks and flawless function.





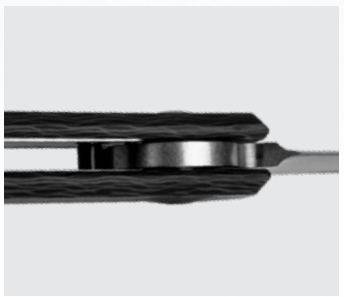
MSRP \$255.00    UPC 087171057057



Minimalist design meets maximum performance in the new 0230 from ZT and Danish designer Jens Anso.

This slipjoint features a double-detent system: two steel detent balls, one on each side of the blade. These hold the blade safely closed for carrying. For controlled open and close, the 0230 also has a half-open position.

The blue anodized aluminum backspacer has an integrated lanyard attachment. And instead of a logo on the blade, we put our name on the spine. Combine that with a 20CV sheepsfoot blade and ultra lightweight carbon fiber handle for a simple, yet extraordinary knife.



**FEATURES**

**STEEL**

CPM 20CV, stonewashed finish

**HANDLE**

Carbon fiber

**MECHANISM**

Manual opening, slipjoint

**POCKETCLIP**

Reversible extra-deep-carry (right/left, tip-up)

**DESIGN**

Jens Anso

**SPECS**

**OPEN**

6.2 in.

**CLOSED**

3.7 in.

**WEIGHT**

1.8 oz.

**BLADE LENGTH**

2.6 in.

**BLADE THICKNESS**

0.121 in.





0235



MSRP \$255.00 UPC 087171059563

**FEATURES****STEEL**

CPM 20CV, stonewashed finish

**HANDLE**

Carbon fiber

**MECHANISM**

Manual opening, slipjoint

**POCKETCLIP**

Reversible extra-deep-carry (right/left, tip-up)

**DESIGN**

Jens Ansø

From ZT and Danish designer Jens Ansø, the 0235 expands on the original 0230, offering a high-class, premium performance carry.

The spear point blade is opened with a double detent system: two steel detent balls, one on each side of the blade. They hold the blade safely closed for carrying. For controlled open and close, the 0235 also has a half-open position.

An extra-deep-carry clip provides a new way of carrying this sleek, simple, and extraordinary design.

**SPECS****OPEN**

6.3 in.

**CLOSED**

3.8 in.

**WEIGHT**

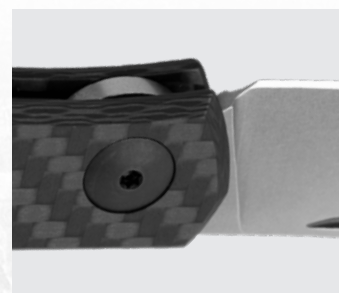
1.8 oz.

**BLADE****LENGTH**

2.6 in.

**BLADE****THICKNESS**

0.121 in.



0235 EXPERIENCE IT





**EXPERIENCE A HIGHER  
STANDARD OF PERFORMANCE**

Once you get a ZT in your hands, you will understand that we are made to deliver unmatched performance. Put us to work and experience what a higher standard of performance means.



# 0450CF



MSRP \$285.00 UPC 087171041094



## FEATURES

### STEEL

CPM S35VN, black DLC coating

### HANDLE

Carbon fiber front; titanium back, black DLC coating

### MECHANISM

Manual opening, KVT ball-bearing system, flipper

### LOCK

Titanium frame lock, hardened steel lockbar insert

### POCKETCLIP

Reversible (right/left, tip-up)

### DESIGN

Dmitry Sinkevich

The Zero Tolerance 0450CF has a dark, sophisticated look.

It features a stronger-than-steel carbon fiber front handle and black Diamond-Like Carbon (DLC) coating on its S35VN blade.

This smaller, gentlemanly ZT opens simply with ZT's KVT ball-bearing opening.

Yet there is one thing that's a bit less subtle about the 0450CF: the two emerald green, custom-machined and anodized aluminum tube spacers that add a touch of "wow" to this ZT.



## SPECS

### OPEN

7.4 in.

### CLOSED

4.1 in.

### WEIGHT

2.45 oz.

### BLADE LENGTH

3.25 in.

### BLADE THICKNESS

0.121 in.

**0450CF** EXPERIENCE IT



0450



MSRP \$275.00    UPC 087171039305



A compact version of an award-winning ZT-Dmitry Sinkevich design, the 0450 is right for the office, outdoors—or wherever your adventures take you.

It features premium materials and looks that will draw admiring glances. The S35VN powdered metallurgy blade offers a razor edge and easy resharpener.

The knife opens smooth as butter with our KVT ball-bearing opening system. The lightweight-yet-strong titanium handles give the 0450 a sleek look and provide a sturdy titanium frame lock.

**FEATURES**

**STEEL**

CPM S35VN, machine satin grinds, stonewashed flats

**HANDLE**

Titanium, stonewashed finish

**MECHANISM**

Manual opening, KVT ball-bearing system, flipper

**LOCK**

Titanium frame lock, hardened steel lockbar insert

**POCKETCLIP**

Reversible (right/left, tip-up)

**DESIGN**

Dmitry Sinkevich



**SPECS**

**OPEN**

7.4 in.

**CLOSED**

4.1 in.

**WEIGHT**

2.9 oz.

**BLADE LENGTH**

3.25 in.

**BLADE THICKNESS**

0.121 in.



0450 EXPERIENCE IT



# 0462



MSRP \$365.00 UPC 087171052328



## FEATURES

### STEEL

CPM 20CV, machine satin grinds, stonewashed flats

### HANDLE

Red carbon fiber front; titanium back, stonewashed finish

### MECHANISM

Manual opening, KVT ball-bearing system, flipper

### LOCK

Titanium frame lock, hardened steel lockbar insert

### POCKETCLIP

Reversible titanium (right/left, tip-up)

### DESIGN

Dmitry Sinkevich

This super-sized version of the 0460 features an upswept blade of CPM 20CV for toughness and wear resistance and a colored carbon fiber front scale with titanium back.

And while the first thing that will catch your notice about this big knife is that sweeping blade and handle curve, we urge you to look closer.

ZT has added details to the interior of the 0462's handle that are just waiting to be discovered.

## SPECS

### OPEN

8.9 in.

### CLOSED

5.25 in.

### WEIGHT

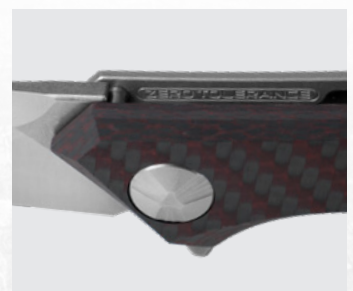
3.7 oz.

### BLADE LENGTH

3.7 in.

### BLADE THICKNESS

0.156 in.





# 0452CF



MSRP \$340.00 UPC 087171039633



Here's technology every bit as vital as your smart phone: your EDC knife. Open a package, section an apple, solve a coworker's cardboard box problem, and look badass doing it with the 0452CF, designed by Dmitry Sinkevich.

The tech here is the advanced-formula CPM S35VN steel and our KVT opening system. The powdered steel is extremely fine-grained so it can be sharpened to a razor edge. Added niobium and nitrogen help it resist chipping.

Caged ball bearings in the KVT system make the knife smooth and easy to open.



## FEATURES

### STEEL

CPM S35VN, machine satin grinds, stonewashed flats

### HANDLE

Carbon fiber front; titanium back, stonewashed finish

### MECHANISM

Manual opening, KVT ball-bearing system, flipper

### LOCK

Titanium frame lock, hardened steel lockbar insert

### POCKETCLIP

Reversible deep-carry (right/left, tip-up)

### DESIGN

Dmitry Sinkevich

## SPECS

### OPEN

9.3 in.

### CLOSED

5.2 in.

### WEIGHT

4.3 oz.

### BLADE LENGTH

4.1 in.

### BLADE THICKNESS

0.156 in.











# EXPERIENCE ULTRA-PREMIUM

High-performance steel. Titanium. Carbon fiber. These ultra-premium materials are matched only by our ultra-premium style, designed to keep you always ahead of the curve.



# 0393GLCF



MSRP \$390.00 UPC 087171055190



## FEATURES

### STEEL

CPM 20CV, working finish

### HANDLE

Titanium, working finish; glow-in-the-dark carbon fiber overlay

### MECHANISM

Manual opening, KVT ball-bearing system, flipper

### LOCK

Titanium frame lock, hardened steel lockbar insert

### POCKETCLIP

Reversible (right/left, tip-up)

### DESIGN

Rick Hinderer

The 0393GLCF's handle is titanium with Rick Hinderer's hard-use "working" finish—a no-nonsense finish that hides scuffs and scratches. By day, the contoured, carbon fiber overlay gives the 0393GLCF a touch of style. But by night, the 0393GLCF reveals another side of its character: glow-in-the-dark carbon fiber.

The 0393GLCF features a harpoon-style version of Rick Hinderer's "spanto" blade in CPM 20CV. For fast and easy opening, the 0393GLCF's blade moves smoothly out of the handle with the KVT ball-bearing system and a flipper.

## SPECS

### OPEN

8.25 in.

### CLOSED

4.75 in.

### WEIGHT

5 oz.

### BLADE LENGTH

3.5 in.

### BLADE THICKNESS

0.156 in.



**0393GLCF** EXPERIENCE IT



# 0562TI



MSRP \$390.00    UPC 087171054117



The 0562TI features Rick Hinderer's exclusive Hinderer "slicer" grind. This flat-ground edge provides both slicing efficiency and a tough point.

CPM 20CV powdered steel offers high wear and corrosion resistance. Zero Tolerance sharpens it to a hair-popping edge that holds for a long time, even under hard use.

The knife opens with a flipper and our smooth KVT ball-bearing opening system. The handle is pure titanium with a handsome stonewashed finish. Machining on the inside of the front handle scales relieves weight and makes the 0562TI an easy EDC.

## FEATURES

- STEEL**  
CPM 20CV, machine satin grinds, stonewashed flats
- HANDLE**  
Titanium, stonewashed finish
- MECHANISM**  
Manual opening, KVT ball-bearing system, flipper
- LOCK**  
Titanium frame lock, lockbar stabilizer
- POCKETCLIP**  
Reversible deep-carry (right/left, tip-up)
- DESIGN**  
Rick Hinderer

## SPECS

- OPEN**  
8.3 in.
- CLOSED**  
4.8 in.
- WEIGHT**  
5.3 oz.
- BLADE LENGTH**  
3.5 in.
- BLADE THICKNESS**  
0.156 in.





# 0562CF



MSRP \$365.00 UPC 087171037370



## FEATURES

### STEEL

CPM 20CV, machine satin grinds, stonewashed flats

### HANDLE

Carbon fiber front; titanium back, stonewashed finish

### MECHANISM

Manual opening, KVT ball-bearing system, flipper

### LOCK

Titanium frame lock, lockbar stabilizer

### POCKETCLIP

Reversible deep-carry (right/left, tip-up)

### DESIGN

Rick Hinderer

The 0562CF features the Rick Hinderer flat-ground “slicer” grind for slicing efficiency and a tough point for piercing. Plus, this ZT’s handle includes a carbon fiber front scale and stonewashed titanium back.

The knife opens with a flipper and moves out of the handle on our smooth KVT ball-bearing opening system. A washer with caged ball bearings surrounds the pivot and makes opening the knife nearly frictionless; just pull back on the flipper and the 0562CF is ready for action.

## SPECS

### OPEN

8.3 in.

### CLOSED

4.8 in.

### WEIGHT

5.5 oz.

### BLADE

### LENGTH

3.5 in.

### BLADE

### THICKNESS

0.156 in.



**0562CF** EXPERIENCE IT





## EXPERIENCE ATTENTION TO DETAIL

Skilled ZT workers pay attention to the fine details and bring us to life. We often include custom hardware, hidden weight-relieving pockets, and stylish 3D machining, pushing us from a great design to an extra-premium ZT.



0022



MSRP \$290.00 UPC 087171053851



## FEATURES

## STEEL

CPM 20CV, stonewashed finish

## HANDLE

Carbon fiber front; titanium back, stonewashed finish

## MECHANISM

Manual opening, KVT ball-bearing system, flipper

## LOCK

Titanium frame lock, hardened steel lockbar insert

## POCKETCLIP

Reversible (right/left, tip-up)

## DESIGN

Tim Galyean

From ZT and Tim Galyean, the 0022 is the most compact ZT ever. But this mini is mighty.

The 1.8-inch clip point blade is ready, willing, and able to take on just about any task you ask of it. Deep finger grooves in the handle ensure you always have a secure grip.

For good looks and reduced weight, the 0022 has a carbon fiber front scale. The titanium trim ring around the pivot and the tube spacer have been anodized in a light blue that looks great against the carbon fiber.

This smaller knife almost disappears in your pocket, making it an exceptionally easy-to-carry option for EDC or back up.



## SPECS

## OPEN

4.75 in.

## CLOSED

3 in.

## WEIGHT

1.7 oz.

## BLADE

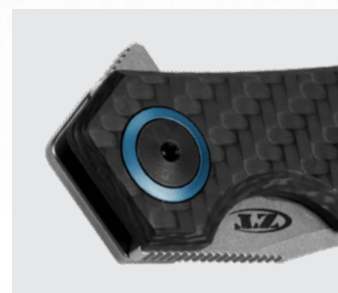
## LENGTH

1.8 in.

## BLADE

## THICKNESS

0.121 in.



0022 EXPERIENCE IT



# 0350TS



MSRP \$235.00 UPC BOX 087171034034



The 0350TS has everything our 0350 has, plus a tiger-striped Tungsten DLC blade.

The blade itself is built of CPM S30V stainless steel. S30V is extremely durable, corrosion resistant, and wear resistant. In addition to providing a camouflaged surface, the DLC coating offers additional blade hardness and reduces friction.

Textured black G10 handle scales offer a secure grip and excellent mechanical strength.

## FEATURES

### STEEL

CPM S30V, Tungsten DLC tiger stripe coating

### HANDLE

Textured G10, matte black

### MECHANISM

Assisted opening, flipper

### LOCK

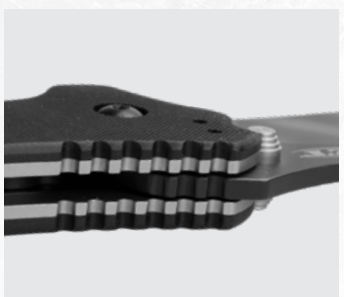
Liner lock

### POCKETCLIP

4-position (right/left, tip-up/down)

### DESIGN

Ken Onion



## SPECS

### OPEN

7.6 in.

### CLOSED

4.6 in.

### WEIGHT

6.2 oz.

### BLADE LENGTH

3.25 in.

### BLADE THICKNESS

0.121 in.





0350



MSRP \$235.00 UPC 087171003504



## FEATURES

## STEEL

CPM S30V, Tungsten DLC coating

## HANDLE

Textured G10, matte black

## MECHANISM

Assisted opening, flipper

## LOCK

Liner lock

## POCKETCLIP

4-position (right/left, tip-up/down)

## DESIGN

Ken Onion

The 0350 packs a lot of features into an EDC-perfect size. It features the ZT assisted opening system. Deploy the blade quickly and easily, even in gloves, using the ambidextrous flipper.

The ZT 0350's blade is CPM S30V stainless steel with non-reflective black Tungsten DLC (Diamond-Like Carbon) coating. This high-performance S30V blade is paired with textured black G10 scales for a secure grip and excellent mechanical strength even under the roughest conditions.



## SPECS

## OPEN

7.6 in.

## CLOSED

4.6 in.

## WEIGHT

6.2 oz.

## BLADE

## LENGTH

3.25 in.

## BLADE

## THICKNESS

0.121 in.







### ZT NECK GAITER

GAITERZT	087171061023	MSRP \$10.99
----------	--------------	--------------

- 92% polyester, 8% spandex
- One size fits most
- 9.8 in. x 19.7 in.



### ZT CHALLENGE COIN

ZTCHALLENGECOIN20	087171061825	MSRP \$9.99
-------------------	--------------	-------------

- Zinc alloy with nickel plating
- Diameter: 1.75 in.
- Weight: 0.9 oz.



### ZT KNIFE STORAGE BAG

ZT997	087171040769	MSRP \$43.99
-------	--------------	--------------

- Accommodates up to 18 folding knives
- Material: nylon siding, nylon straps
- 8-pocket removable center section



### ZT SINGLE-KNIFE POUCH – KEVLAR

POUCHZT	087171059174	MSRP \$19.99
---------	--------------	--------------

- Holds any ZT folder (≤ 5.25")
- Zippered Kevlar case





### ZT T-SHIRT - FLAG

MSRP  
\$29.99

S	SHIRTZT201S	087171059099
M	SHIRTZT201M	087171059105
L	SHIRTZT201L	087171059112
XL	SHIRTZT201XL	087171059129
XXL	SHIRTZT201XXL	087171059136



### ZT T-SHIRT - 0357

MSRP  
\$29.99

S	SHIRTZT2021S	087171061832
M	SHIRTZT2021M	087171061849
L	SHIRTZT2021L	087171061856
XL	SHIRTZT2021XL	087171061863
XXL	SHIRTZT2021XXL	087171061870



### ZT T-SHIRT - CHARCOAL

MSRP  
\$20.00

S	SHIRTZT182S	087171053059
M	SHIRTZT182M	087171053066
L	SHIRTZT182L	087171053073
XL	SHIRTZT182XL	087171053080
XXL	SHIRTZT182XXL	087171053097



### ZT CAP - FLAG

CAPZT201	087171059167	MSRP \$34.99
----------	--------------	--------------

- Flat brim visor
- Adjustable closure





### SINGLE-KNIFE BLADE STAND

DISPLAYZTB14	087171040516	MSRP \$2.00
--------------	--------------	-------------

- Durable acrylic design
- Holds a single knife blade



### ZT PVC PATCH

ZTPATCH17	087171049236	MSRP \$5.00
-----------	--------------	-------------

- Hook and loop self-fastening backing
- 3.25 in. x 1.125 in.



### SINGLE-KNIFE STAND

DISPLAYZT114	087171040523	MSRP \$4.00
--------------	--------------	-------------

- Durable acrylic design
- Holds a single open knife



### ZT WINDOW CLING

ZTCLING17	087171049250	MSRP \$3.00
-----------	--------------	-------------

- Transparent background
- Sunlight-color-safe
- 6 in. x 2 in.



### TRIPLE-KNIFE STAND

DISPLAYZT314	087171040530	MSRP \$6.00
--------------	--------------	-------------

- Durable acrylic design
- Holds three open knives





**EXPERIENCE IT ALL**

Precision. Performance. Craftsmanship. Quality and style. We're built to take on the challenge of whatever life throws at us. From a day on the job to your next adventure, we're built so that you can experience it all every time you carry a ZT.





## LIMITED LIFETIME WARRANTY

Zero Tolerance knives from Kai USA Ltd. carry a limited warranty for the lifetime of the original owner, except when stated otherwise. We guarantee our knives against manufacturing defects in material and construction and to perform as advertised when properly used and maintained. The Limited Lifetime Warranty is non-transferable and does not extend to normal signs of wear, rust, damage or breakage due to improper use, improper maintenance, accidents, loss, or theft. This warranty is void on products that have been modified in any way. Any product we determine to be defective will be repaired or replaced solely at our discretion. To receive warranty repair or replacement, the owner must send the product to be evaluated by Kai USA Warranty Services in our Tualatin, Oregon headquarters. In addition to the provisions of this warranty, the owner may also have other rights that can vary by state. No other warranties are implied or expressed other than what is specifically stated here. Kai USA Ltd. reserves the right to determine what constitutes normal wear, improper use/maintenance, and modification.

If you accidentally break your ZT folder's blade, we can replace it for just \$40, pending material availability. Blades that break due to a manufacturing defect will still be replaced under warranty, free of charge. Blades marked "XXXX" are factory seconds and are not eligible for replacement.



## LIABILITY DISCLAIMER & WARNING

Zero Tolerance knives are intended and sold for legitimate everyday carrying, sporting, and professional purposes only. The purchase, use, and ownership of knives are subject to a wide variety of federal, state, and local laws and regulations. Always comply with all laws and regulations in effect in your area. Due to the complexity and constantly changing nature of these laws and regulations, it is the responsibility of the buyer to investigate and comply with the laws and regulations that apply in his or her specific area. You, and not Kai USA Ltd., are solely responsible for any claims resulting from violation of these laws and/or regulations.

Knives are extremely sharp tools and should only be used or handled with the utmost care and caution. Any use other than cutting (such as prying or twisting) is considered misuse and abuse—and will void your warranty. Zero Tolerance knives/Kai USA Ltd. is not responsible for any injuries resulting from misuse or abuse of the product.

Do not use any ZT knife as a throwing knife or a stabbing device. Throwing knives and knives developed for stabbing have a distinctly different design and function. ZT knives are not intended for throwing or stabbing; they are designed for cutting purposes only.

We reserve the right to change shipping terms, specifications, materials, discontinue products, adjust blade replacement price and availability at any time, without notice.

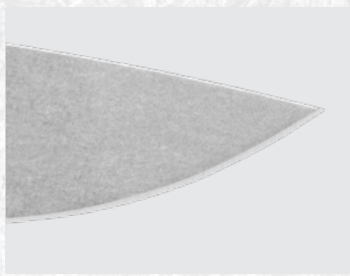


## ZT REPLACEMENT PARTS

In addition to a selection of free replacement parts, you can get replacements for other ZT parts as well. However, these premium ZT parts are more costly to manufacture, so we charge a small fee. Please check our website for details on the parts currently available.

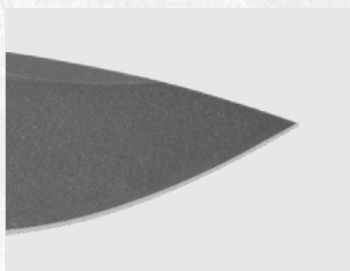


# STEEL CHART



## CRUCIBLE CPM MAGNACUT

This Crucible powdered metallurgy steel eliminates chromium during heat treatment, allowing for vanadium and niobium to form greater carbides near the cutting edge. This formula creates an exceptional balance of edge retention, toughness, and corrosion resistance.



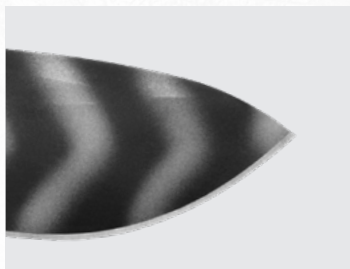
## CRUCIBLE CPM 3V

A high carbon tool steel that resists edge chipping with superior toughness. It has a high volume of vanadium carbides for greater wear resistance and hardness.



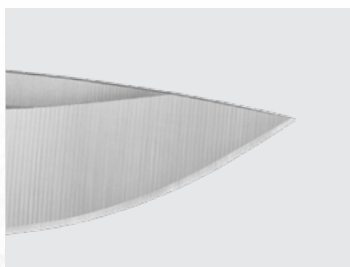
## CRUCIBLE CPM 20CV

This powdered metallurgy tool steel has a high volume of vanadium carbides for exceptional wear resistance and a long-lasting edge. The highest level of chromium of any high-vanadium steel gives it excellent corrosion resistance and polishability as well.



## CRUCIBLE CPM S30V

All-around premium knife steel that takes and holds an edge extremely well; also extremely tough and wear resistant.



## CRUCIBLE CPM S35VN

A stainless steel that offers enhanced toughness over S30V without loss of wear resistance. In knife blades, S35VN resists edge chipping and provides excellent edge retention.

STEEL	CARBON (C)	CHROMIUM (Cr)	MOLYBDENUM (Mo)	VANADIUM (V)	TUNGSTEN (W)	COBALT (Co)	NICKEL (Ni)	MANGANESE (Mn)	SILICON (Si)	SULPHUR (S)	PHOSPHORUS (P)	COPPER (Cu)	NIObIUM (Nb)	NITROGEN (N)	HRC
CPM MAGNACUT	1.15 %	10.7 %	2.0 %	4.0 %	-	-	-	-	-	-	-	-	2.0 %	0.2 %	60-62
CPM 20CV	1.9 %	20.0 %	1.0 %	4.0 %	0.6 %	-	-	-	-	-	-	-	-	-	60-62
CPM 3V	0.8 %	7.5 %	1.3 %	2.75 %	-	-	-	-	-	-	-	-	-	-	58-60
CPM S30V	1.45 %	14.0 %	2.0 %	4.0 %	-	-	-	-	-	-	-	-	-	0.2 %	57-59
CPM S35VN	1.34 %	14.0 %	2.0 %	3.0 %	0.4 %	0 to 0.5 %	0.1 to 0.4 %	0.5 %	0.5 %	0.03 %	0.03 %	-	-	0 to 0.13 %	60-62

WE RESERVE THE RIGHT TO CHANGE MATERIALS WITHOUT NOTICE





## ABOUT THE PROP 65 NOTIFICATION

You may have seen more Prop 65 warnings on our products lately.

First, understand that nothing has changed with the materials or manufacturing processes Kai USA uses to make our products.

The one thing that HAS changed are the notification requirements of Proposition 65.

Prop 65 is a 1986 California law that requires California residents to be notified of products that could expose them to chemicals known by the state of California to "cause cancer, birth defects or other reproductive harm." This law was recently expanded to apply to all retailers as well as those who sell products under a private label.

In fact, there are hundreds of chemicals on the California Prop 65 list—including things like nickel and chromium that have always been a part of knife steel. As a responsible manufacturer, we are including the warning as required by the law. Since we don't always know where our products are sold, this protects our company and our authorized retailers.

But again, nothing except the notification requirement has changed. Carrying and using our products is no more hazardous than before Prop 65. It will continue to be an important part of the tools you carry with you and use every day.

### GENERAL: ⚠ WARNING

This product can expose you to a chemical (or chemicals) that are known to the State of California to cause cancer or reproductive harm. For more information go to [www.P65Warnings.ca.gov](http://www.P65Warnings.ca.gov).

### LEAD: ⚠ WARNING

This product can expose you to chemicals including lead, which is known to the State of California to cause cancer and birth defects or other reproductive harm. For more information go to [www.P65Warnings.ca.gov](http://www.P65Warnings.ca.gov).

### BENZENE: ⚠ WARNING

This product can expose you to chemicals including benzene, which is known to the State of California to cause cancer and birth defects or other reproductive harm. For more information go to [www.P65Warnings.ca.gov](http://www.P65Warnings.ca.gov).

### CARBON MONOXIDE: ⚠ WARNING

This product can expose you to chemicals including carbon monoxide, which is known to the State of California to cause cancer and birth defects or other reproductive harm. For more information go to [www.P65Warnings.ca.gov](http://www.P65Warnings.ca.gov).

### DEHP/BPA: ⚠ WARNING

This product can expose you to chemicals including di(2-ethylhexyl)phthalate (DEHP), which is known to the State of California to cause cancer, and Bisphenol A (BPA), which is known to the State of California to cause birth defects or other reproductive harm. For more information go to [www.P65Warnings.ca.gov](http://www.P65Warnings.ca.gov).

LIST OF ALL ZT PRODUCTS THAT MAY  
CONTAIN THE ITEMS LISTED ABOVE

SKU

CHEMICAL

ZT997  
Knife Storage Bag

BPA